

Lubrication ToolsPage No. 41

- Grease Guns and Accessories
- Oil Drum Pumps
- Grease Nipple Tools
- Bearing Packers
- Drain Plug Wrenches Sets
- Oil Drain Trays
- Oil Drain Resivoir
- PVC Oil Flasks
- Funnels and Siphon Pumps
- Oil and Water Faucets

Lubrication Tools & Equipment



Blank Page



No.A480N Pistol Grip Grease Gun

Designed for easy one hand operation.
Easy three-way loading:
1: Takes standard 16oz(450g) cartridge
2: Fill from pressure fed pump
3: Built in plunger suction
Rugged steel and aluminium construction.
Includes a 6" rigid nozzle extension.



No.A500L Air Operated Grease Gun

One hand greasing made easy with a press of your finger. Develops 1,500 to 6,000psi when attached to a compressed air supply of 30 to 150psi.
Easy three-way loading:
1: Takes standard 16oz(450g) cartridge
2: Fill from pressure fed pump
3: Built in plunger suction
Rugged steel and aluminium construction.
Includes a 6" rigid nozzle extension.
Maximum Inlet Air Pressure: 150psi.
Thread: 1/4"NPT thread.

Fully Automatic, Cycles Continuous Grease Flow



360° Rotating Handle

No.A508CL 360° Rotating Continuous Flow Air Powered Grease Gun

New design high quality air operated grease gun with continuous flow of grease with only one pull of the trigger.
Large wingnut at the back of the air motor enables the handle to rotate to any working angle. (360° Rotation)
High polished chrome plated cylinder uses 16oz grease cartridge or can be bulk filled.



No.OL005 Mini Grease Gun

Application for mini bearings, model planes, car toys, reels, automotive and marine parts etc.
Ideal for hard to reach areas.
Operates with smooth flow action and features fine tapered nozzle.
Length: 7"(180mm)
Capacity 100ml



No.OL009 Mini Grease Gun Refill Pack

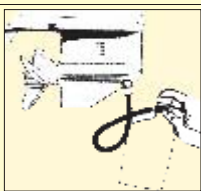
Replacement mini grease gun cartridge to suit OL005 mini grease gun.
Capacity 100ml



Three way "Z" swivel assembly enables 360° rotation in any direction

No. JS626 Lubrication Boost Gun

Can easily boost greasing to over 10,000psi on demand. Unit has 360° Z swivel assembly to flex at any angle or in any direction.
Delivers grease at the pump pressure of 300psi with the boost function building pressure to 10,000psi. A real advantage for tough greasing situations. Includes a 5"(125mm) extension with four jaw coupler.
JS626-F 12"Flex Nylon Hose w/ Coupler



Pump has adjustable depth pickup tube

No.J7950 Marine Lower Unit Flush & Fill Pump

Hand operated plunger pump that will screw onto gear box oil containers with universal threaded adaptor to fit marine lower units.
Use pump to refill or flush out lubricant.

No.A501 Suction Gun

Universal oil syringe, ideal for gearbox and differential draining and filling.
Capacity of 500cc and suitable for oils up to SAE 90.



No.AL504 Transfer Pump

Great for quick transfer of liquids from one location to another. 2 in 1 pump siphons from one source to another simultaneously.
Fitted with 3ft(1m) hoses.
Capacity of 500cc and suitable for oils up to SAE 90.





No.A490 Telescopic Drum Pump

- Fits 60 & 205 litre drums

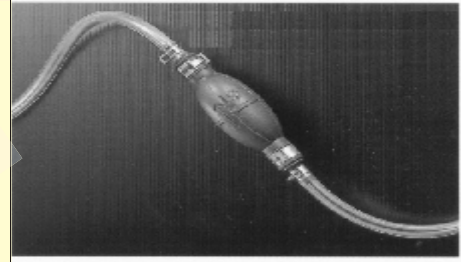
High quality all purpose pump for fuels and oils up to SAE 90 and other non-corrosive liquids. The pump comes with a telescopic suction tube allowing for use in both 12 and 44 gallon drums.



No.WH107 Oil & Water Faucet Gun

Automatic shut valve for efficient on-tap fluid dispensing.

Inlet Opening: 1/4"NPT



No.WH101 Fluid Siphon Pump

Emergency fuel transfer kit features large non-perishable rubber bulb with one way check valve and two 1 metre lengths of 14mm PVC tubing. Safe and easy way for transferring fuel or any other fluid using gravity feed.



No.RT2000 Multi-Purpose Funnel

Multi-purpose PVC funnel features large capacity, quick screw on flexible spout and PVC small hose filler suitable for transmission filling. Gauze filter is removable for easy cleaning. Side handle and hanging hook make for trouble free use.

Diameter: 7"(180mm)



No.RT1999 Flexi-Spout Funnel

Multi-purpose PVC funnel features large capacity, 190mm diameter, 395mm long flexible spout. Suitable for engine and transmission filling. Gauze filter is removable for easy cleaning. Side handle and hanging hook make for trouble free use.

Dimensions: 190x190x450mm



No.2100A Locking Oil Funnel

This funnel with its specially designed filler neck will lock onto the engine oil filler neck to prevent oil spills.

Size: 6" x 3.1/2" x 3.1/2"(150 x 90 x 90mm)



No.7411 Precision Oiler

Precision manufactured oiler made from aluminium & designed for spot oiling of fine machinery etc. Oil dispensed via needle type injection and controlled by push plunger, giving total control of oil usage. Equipped with pocket clip and removable needle cover.

Length: 5.1/2"(140mm)



No.J5696 Universal Square Drain Plug Wrench

For servicing cars and trucks with internal square drain and filler plugs. Tapered square ends ensure a positive fit into worn filler plugs.

Square Sizes:

5/16", 3/8", 7/16", 1/2", 9/16", 5/8"
(8mm, 10mm, 11mm, 13mm, 14mm, 16mm)

Length: 8.1/4"(210mm)



5512



5514



5517

Drain Plug Wrenches

Designed to fit into confined areas for removal and replacement of in-hex filler and drain plugs on gearboxes, differentials and engine sumps. 3/8" Square Drive.

No.5512 Size: 12mm In-Hex

No.5514 Size: 14mm In-Hex

No.5517 Size: 17mm In-Hex



No.4944 3Pc. Sump Plug Oil Drain Shield Kit

Use to remove sump plugs from hot engines and protect hands from burns. Prevent dropping sump plug into drain pan. Three double ended tools with sizes to suit most plugs.

Set consists of the following sizes:

1: 1/2" (13mm) & 9/16" (14mm)

2: 5/8" (16mm) & 11/16" (18mm)

3: 3/4" (19mm) & 7/8" (22mm)



No.5692 Metric Drain Plug Wrench (8mm & 10mm Square.)

For servicing internal square drain and filler plugs fitted to many Asian & European vehicles. Made from forged alloy steel.

Sizes: 8mm & 10mm square

Length: 11.1/2"(295mm)



No.5690 Universal Drain Plug Wrench Set

12 Piece drain plug wrench set will enable you to reach into confined areas for removal and replacement of both internal square and in-hex filler and drain plugs on gearboxes, differentials and engine sumps.

Hexagon sizes: 5/16", 3/8", 8mm, 9mm, 10mm, 12mm, 14mm, 17mm

Square sizes: 5/16", 3/8", 11mm, 13mm Universal Sliding T-bar.



No.LY2051

Vacuum Oil Changer

Because of the viscosity of oil and capillary attraction, used oil often gets trapped in engine grooves. The vacuum oil changer can clean up used oil 100%. The patented oil-submersible pump is most reliable with a ten year durability warranty. Suitable for evacuating all kinds of engine oil, brake fluid, automatic transmission fluid, and coolant. Thoroughly change oil without residue, prolonging engine life. Saves both time and labour.

Dimensions: 710x650x1280mm

Capacity: 60 L.

Vacuum chamber capacity: 20 L

Oil suction capacity: 5.6 L/min

New oil capacity: 6 L

Weight: 266lb(119kg)

Features: Oil dispensing function



Vacuum Chamber

Oil Submersible Pump



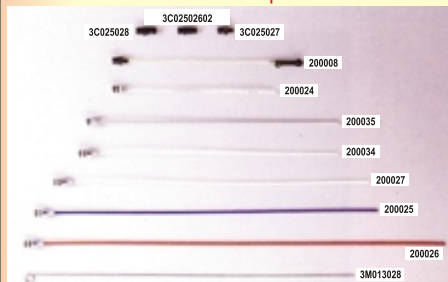
Alloy Rear Roller

Vacuum Gauge



Lifetime Switch

Speed Connector



Standard Accessories

3C02502602	Benz Connector
3C025028	Benz.BMW Connector
3C025027	Connector for coolant
200008	Connector-brake fluid suction
200024	3/8" gear oil tube
200035	Aluminum tube
200034	5.8m/m oil suction tube
200027	6 m/m oil suction tube
200025	6 m/m steel oil suction tube
200026	7 m/m steel oil suction tube
3M013028	Steel string



3C030005

Oil Drain Pan (optional)



No.T50D 50 Litre Oil Drain Reservoir

Composite lid and drum with 50ltr reservoir and drain pan on telescopic post. Gravity drain using tap on rear of unit. Includes visible Full Drum device. Large diameter drain pan insert and heavy duty mesh for draining oil filters.
Oil Capacity Holding: 50 Litres
Collapsed Height: 900mm
Extended Height: 1070mm



No.T80D 80 Litre Oil Drain Reservoir

For the convenient, safe collection and handling of waste oil. Features air powered waste oil discharge, telescopic extension tube & wine glass bowl.
Oil Capacity Holding: 80 Litres
Collapsed Height: 1140mm
Extended Height: 1580mm



No.T30D 30 Litre Oil Drain Reservoir

Composite lid and drum with 30ltr reservoir and drain pan on telescopic post. Gravity drain using tap on rear of unit. Includes visible Full Drum device. Large diameter drain pan insert and heavy duty mesh for draining oil filters.
Oil Capacity Holding: 30 Litres
Collapsed Height: 880mm
Extended Height: 1050mm



No.WH081
8 Litre Oil Drain Tray
with Nozzle

Heavy duty polypropylene low profile tray with pouring spout & carry handles for easy drainage of engine and transmission oils.
Capacity: 8 Litres



No.WH082
16 Litre Oil Drain Tray
with Nozzle

Heavy duty polypropylene low profile tray with pouring spout & carry handles for easy drainage of engine and transmission oils.
Capacity: 16 Litres



No.WH083
24 Litre Truck & Tractor
Oil Drain Tray

Extra large polypropylene oil tray for easy drainage of engine and transmission oils on trucks and tractors.
Capacity: 24 Litres



No.WH080
8 Litre Oil Drain Container

Low profile 8 litre tank easily fits under car for draining engine and transmission oils without lifting vehicle. Tapered conical shape drains fluid to the centre drain plug hole. Also doubles as a handy drip tray.
Height: 4"(100mm)
Capacity: 1.3/4 Gallons(8Litres)
Neck Taper: 1" to 1.5/8"(25 to 40mm)



No.WH8560
30 Litre Low Profile
Oil Drain
Container Mobile



*Only 125mm high.(including casters)
Polyethylene material for heavy duty use.
4 casters provide best maneuverability.*

Designed for waste fluid receiving during repairing jobs. Very low profile which can slide under passenger car easily. With covered splash net to prevent spillage and splash. One piece polyethylene plastic can be used for antifreeze. Very suitable for cooling system repairing job.
Dimension: 850x600x125mm
Capacity: 30 L
Weight: 6 Kg



No.RT2006
5 Litre Fuel Can

Extra strong versatile fuel container with screw on flexible spout. The ideal container for emergency and storage of mixed fuels.
Capacity: 1.1gallons (5 litres)

No.B100

80 Litre Low Profile Oil Drain Container Mobile

Designed for waste fluid receiving during repairing jobs. Very low profile which can slide under truck easily. With covered splash net to prevent spillage and splash. One piece polyethylene plastic can be used for antifreeze. Very suitable for cooling system repairing job.

Dimension: 1200x700x250 mm
Capacity: 80 L
Weight: 34 Kg

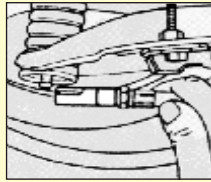




No.10-028

Standard Grease Gun Coupler

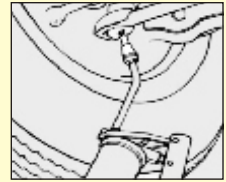
Standard jaw type coupler features spring loaded ball check valve. Fits all 1/8"NPT threads. Recommended working pressure of 3,000psi.



No.5698

Right Angle Grease Coupler

- **Works in the most confined positions**
Specially designed seal and slot in coupler housing provides 90° access into areas of minimal clearance.
Fits all standard grease guns.
Thread Size: 1/8"NPT



No.5699

Locking Grease Fitting Coupler

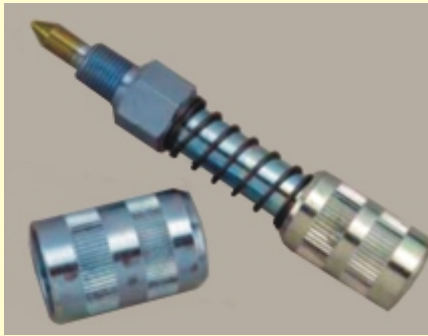
- **Locks onto Zerks**
Coupler works both ways, as a lock-on coupler or as a snap-on coupler. Makes greasing a one hand job. Steel jaws grip Zerk tightly, won't pop-off or freeze when applying grease.
Thread Size: 1/8"NPT



No.5697

Right Angle Grease Gun Coupler

For all hand grease guns.
For hard to reach grease fitting on cars, trucks and equipment. Ideal for lubrication of late model front wheel drive vehicles. Includes both small and large sleeves to fit over all standard couplers.



No.5696

Needle Point Quick Disconnect Grease Adapter

For all hand grease guns.
Converts standard jaw-type lube couplers to steel needle points. Small and large sleeves are supplied to fit most common couplers.



No.5701

Long Needle Nose Grease Nipple Adapter

For all hand grease guns.
4" adapter.
Dispenses fine line of grease.
Fits over all couplers.



No.5689

Grease Injector Needle

The grease injector needle can be easily inserted under or through bearing seals, CV boots etc.
Made from 18 gauge stainless steel.
Use with hand grease gun.
Supplied with protection sleeve.



No.10-212

Flex Grease Gun Extension Hose

For use on all grease guns.
Heavy duty 1/8"NPT male fittings on each end. Recommended working pressure of 3,000psi.
Burst pressure: 12,000psi
Length: 12"(300mm)



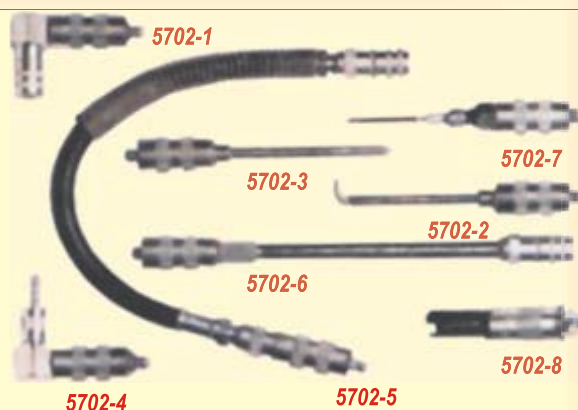
No. 5694

10Pc. Lubrication Adapter Service Kit

Set Contains

- 5694-1** Needle Adapter.
 - 5694-2** Whip Hose with heavy duty quick disconnect coupler.
 - 5694-3** Recessed Lube Adapter with quick disconnect.
 - 5694-4** Rubber tipped seal off dispenser with quick disconnect.
 - 5694-5** 1.5" narrow needle adapter with quick disconnect.
 - 5694-6** Right angle adapter with quick disconnect.
 - 5694-7** 90° adapter with quick disconnect.
- 3 Pc fits over all couplers.

Available Separately



No. 5702

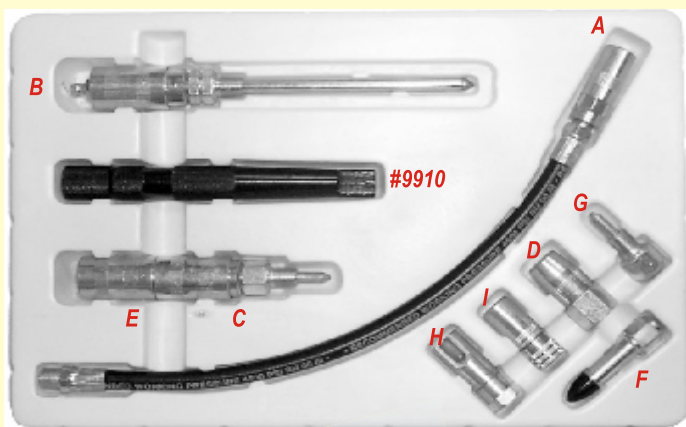
Lubelink Automotive Accessory Kit

The lubelink kit features the quick connect system on all fittings and adaptors.

Set Contains

- 5702-1** Right angle coupler 90°
- 5702-2** Needlepoint coupler.
- 5702-3** Hypodermic needle coupler.
- 5702-4** Right angle needlepoint coupler.
- 5702-5** 16" hose with coupler.
- 5702-6** 6" rigid extension with coupler.
- 5702-7** 3" straight needlepoint coupler.
- 5702-8** Right angle tight tolerance coupler.

Available Separately



No. 5695 Grease Nipple Service Kit

Set Contains

- 5695-A** 12"(300mm) Hose with Coupler
- 5695-B** Long Needle-Nose Grease Adaptor
- 5695-C** Short Needle-Nose Grease Adaptor
- 5695-D** H/Duty Grease Gun Coupler (4000psi)
- 5695-E** Push-On Adaptor (For recessed fittings)
- 5695-F** Seal-Off Dispenser (Rubber tip)
- 5695-G** Needle Point Adaptor (For uni-joints)
- 5695-H** Right Angle Grease Coupler
- 5695-I** Grease Gun Coupler with Ball (3000psi)
- 9910** Zerk Grease Fitting Tool (Clearing Tool)

Available Separately

No. 5700

12Pc. Grease-Dispensing Accessory Pack

Set Contains

- #5700-2** **Flex Whip Hose.** For powered and hand-operated grease guns. 1/8" NPT(m) both ends. 4500 maximum PSI. 12" long.
- #5700-3** **Flex Whip Hose.** 18" long version of FT-530-2.
- #5700-4** **Heavy-Duty Coupler.** 1/8" NPT(f) thread.
- #5700-5** **Swivel Coupler.** 1/8" NPT(f) thread. Swivels a full 360°. The swivel locks in position every 45°.
- #5700-6** **Coupler.** 1/8" NPT(f) thread. Fits all hydraulic-type grease fittings.
- #5700-7** **Extension Coupler.** Lubricates recessed fittings. Locking sleeve adaptor allows quick attachment to hydraulic coupler of any control valve or lever gun. 6" long.
- #5700-8** **Angle Lube Adaptor.** 90° head allows fast and complete lubrication of steering and suspension systems on late-model front wheel drive vehicles. 4-1/2" long.
- #5700-9** **Flex Whip Hose.** For hand-operated grease guns only. 1/8" NPT(m) both ends. 18" long.
- #5700-10** **Universal Swivel.** High-pressure swivel. 1/2"-27 male x 1/4" NPT (m) threads. 5000 PSI maximum working pressure.
- #5700-11** **Needle Nozzle Coupler.** This is the #5700-1 with a locking sleeve adaptor for quick attachment to a hydraulic coupler.

Available Separately



Note: 5700-1 Needle Nozzle is included as part of 5700-11 with locking sleeve.





No.7385

E-Zee Bearing Packer

A four second operation, flush out old grease with new No air hose necessary. Will pack up to 50 bearings with one filling. Use on cars, light trucks, trailers etc. Made of transparent Lexan.

When using heavy grease use vice to exert extra pressure.

Capacity: 3.3/4"(95mm) OD



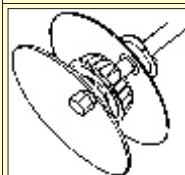
No.7380 Bearing Packer



Works on all bearings having a minimum ID of 1/2"(13mm) to a maximum OD of 5"(125mm) and a height up to 2"(50mm).

Use with hand or power lube equipment.

Makes a messy job easy and ensures proper packing of bearings. Rugged construction.



No.7381 Truck Bearing Packer



Similar to #7380 but with larger capacity.

Suitable for packing bearings on light and heavy trucks, tractors etc.

Capacity: 6.1/2"(165mm)

PVC Oil Flasks

Handy range of oil dispensing beakers available in five sizes with capacities from one to five litres.

Gradations: 500ml steps

Part No.	Capacity
RT2001	1 Litre
RT2002	2 Litre
RT2003	3 Litre
RT2004	4 Litre
RT2005	5 Litre



RT2001

RT2002

RT2003

RT2004

RT2005



No.2008

Brass In-Line Oiler

Oil reservoir made from brass and high impact plastic. Oil level is easily monitored. Keeps tool lubricated by injecting a fine spray.

Size: 1/4"NPT Male inlet and

Size: 1/4"NPT Female outlet



No.9910

Zerk Grease-Nipple Clearing Tool

This tool will clear blocked grease nipples. Fill with oil or grease, hold against the nipple and strike with a hammer to hydraulically clear the grease nipple and fitting.

Length: 6.3/4"(170mm)



No.5687

Mini Grease Nipple Tool

Tightens and removes Alemite pin type grease nipples. Removes broken fittings and rethreads crossed threads. Designed for 1/4"UNF threaded nipples. Handles both straight & offset nipples.

Hex Sizes: 5/16" & 3/8"

Rethreader Size: 1/4"UNFg



No.5688

Grease Nipple Tool

- Handy extractor & rethreader

Tightens and removes Alemite pin type grease nipples. Removes broken fittings and rethreads crossed threads.

Designed for the 1/8"pipe tap thread. Handles both straight & offset nipples.

Hex Sizes: 3/8" & 7/16"

Rethreader Size: 1/8"NPT gas thread



No.6217

Grease Cap Pliers

This tool will quickly remove and replace the most stubborn grease caps. The thin ground wedge shaped jaws take a firm bite behind the grease cap lip, forcing it away from the hub. Hammer head replaces caps.

Length: 10.1/2"(265mm)

